

WARNING!

- Follow directions for use.
 - Use of gloves is recommended.
 - Do not drink or breathe in the liquid in the sample tube or let it touch your skin.
 - Avoid contact with eyes or respiratory tract.
 - If contact with body occurs, rinse with water.
 - If irritation persists, seek medical advice.
- Keep out of reach of children.



YCT MEDLABS

COVID-19 Home Sample Collection Test

Instruction For Use & Return Options

INTENDED USE

The COVID-19 Screening Sample Collection Kit is intended for use in the collection and transportation of nasopharyngeal (nose and throat) swabs to be analysed by our laboratories for the detection of the 2019-Novel Coronavirus (SARS-CoV-2).

Before you start, read all the instructions in this leaflet, and make sure you fully understand how the test should be done. Do not unpack the test till you are ready to take the test.

3 Simple Steps

STEP-1

Register Your
Kit & Sample
Collection

portal.yourcovidtests.co.uk

REGISTER YOUR KIT and sample collection date and time on our portal. You will need your UID, email address and phone number to login. Please confirm your barcode is correct and provide the sample collection date and time.

STEP-2

Package Your
Sample

Follow the instruction on the right side of this section in packing your kit ready for return to our partner laboratory. A pre-paid UN3373 Return envelop is included for your return.

STEP-3

Return Your
Sample

REGISTER YOUR KIT and sample collection date and time on our portal. You will need your UID, email address and phone number to login. Please confirm your barcode is correct and provide the sample collection date and time.

Write Your Barcode Reference Here

Retain This Sheet For Your Reference



Scan Here For Portal Access

01732840100

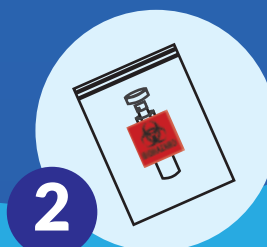
info@yourcovidtests.co.uk

www.yourcovidtests.co.uk

STEP 3 – Pack



Place the Labelled Sample Collection Tube with Liquid containing the swab into the transportation tube and seal.



Place the transportation tube into the pathoseal bag and seal by removing the metallic silver strip. Ensure the blue adhesive strips make a tight seal of the bag.



Insert the sealed pathoseal bag into the Return Box. Place the Return Box into the UN3373 Return envelope. Seal the return envelope by removing the metallic strip and wipe down the exterior of the bag.

Sample Collection

1



Wash your hands thoroughly, for at least 20 seconds, using soap and water

2



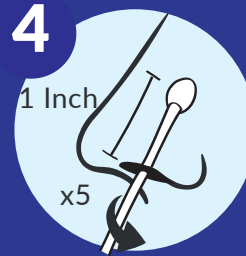
Open the package containing the swab, DO NOT touch the soft tip or lay the swab on any surface.

3



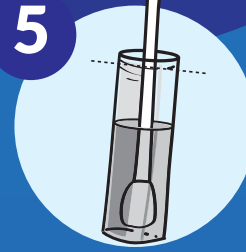
Holding the swab in your dominant hand, open your mouth (use a mirror for guidance) and gently rub the swab over both tonsils and the back of the throat. DO NOT touch your tongue, teeth, gums or any household surfaces

4



Place the Labelled Sample Collection Tube with Liquid containing the swab into the transportation tube and seal.

5



Remove swab from the nose, and while holding the swab, remove the lid from the Labelled Sample Collection Tube with Liquid, immediately place the swab into the tube with the fabric tip down, again taking care not to touch any other surfaces. Break, snap or cut swab to fit inside the Labelled Sample Collection Tube with Liquid, then replace the sample collection tube lid, ensuring it is securely fastened. Please ensure to leave your swab in the Labelled Sample Collection Tube with Liquid. DO NOT spill or remove the contents of the tube, or return your sample without the swab, this is required for sample processing.

6



Wash Hand Again

NOTIFICATION OF RESULTS

Once your sample has been tested, your results will be emailed to you, using the email address provided when you registered your kit. The result is also available on your portal, please login with your UID, email and phone number.

The following result outcomes are possible:

1. Your result is POSITIVE for COVID-19
2. Your result is NEGATIVE for COVID-19
3. Your result is UNCLEAR and a new sample is required for testing -this result occurs when it has not been possible for the laboratory to test your sample (for example, due to failure of an individual to take and send their sample correctly)

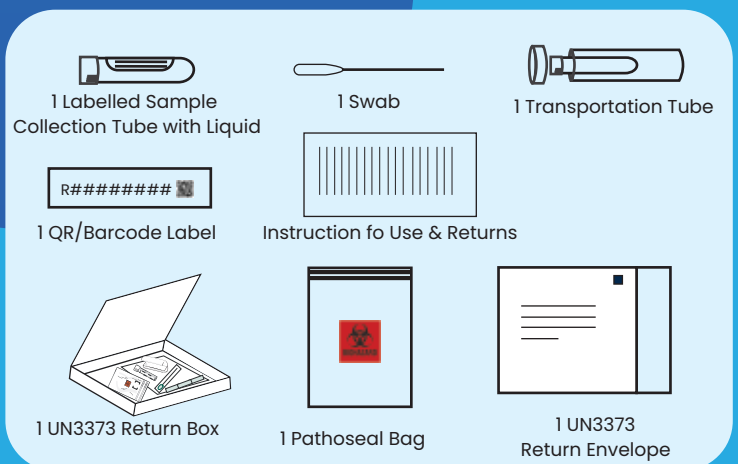
RETURN NOTICE

Please ensure you drop off samples within the same day the sample was taken. Samples must arrive within 70 hours of swabbing to undergo testing. Samples which arrive after 70 hours will be void and would produce an unclear result.

CHECKLIST

- Have you registered your kit at : <https://portal.yourcovidtests.co.uk>
- Have you confirmed the QR/Barcode on the label on your Sample Collection Tube and noted it down on this sheet for reference?
- Have you arranged your return by post?

Items that make your complete kit.



It is crucial that you register your test at <https://portal.yourcovidtests.co.uk>

This registration process is essential, as without it, YCT MedLabs will not be able to provide you with results. You will not be able to receive your results if you have not registered your test kit's QR/Barcode online. By submitting a sample to our laboratory, you are consenting to the testing of that sample.

